



**SCHOOL UNIFORM- GIRLS**

**(Std. XI-XII)**

Dear Parents,

The uniform specification and information for Std. XI & XII is as given below.

➤ **UNIFORM ON WEEKDAYS :**

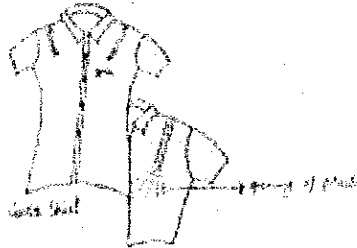
**Shirt :** White half sleeve standard shirt with two inches wide inverted top- stitch box pleat at mid -shoulder, opening one inch above the chest. BVM Monogram in house color at the end of pleat on left.

**Skort :** Knee length skort in Welworth Manchester black and white stripe suiting Fabric No. 3163. The skort has an attached plain black cotton inner shorts. Swatches of both fabrics are attached . The left front of the skort has 4 -- broad open knife pleats which are overlapped by the right front of the skort having 4- broad top stitched knife pleats with three extended buckles.

**Tie :** Long necktie made in skort fabric.

**Footwear :** Black shoes ( Action Genius Jogger – Article No. 67502) and plain white socks without design.

**Fabric No. 3163**  
**For Skort ( Girls ) & Tie**



**Fabric for Skort Inner ( Girls )**



➤ **UNIFORM ON SATURDAY :**

**Shirt :** White half sleeve standard shirt stitched according to the given pattern with BVM school Monogram of the house colour.

**Skirt :** White skirt with box pleats.

**Footwear :** White shoes ( Action Genius Jogger – Article No. 67502) and plain white socks.


**WINTER UNIFORM:** Dress same as Summer Uniform and Sweater / Jacket of Navy Blue colour.

**House Colours**

1) Lily	Red
2) Lotus	Blue
3) Jasmine	Green
4) Daffodil	Yellow

**NOTE:**

- 1) The school does not authorize any shop for the sale of uniforms. Parents should purchase the uniform as per the prescribed color and pattern.
- 2) The length of the skirt needs to be upto the knee.

  
29/3/23  
( Smt. Parwati G. Iyer )  
Principal